

Advanced compatibility with FURUNO professional radar range

Thanks to its partnership with the leader in marine electronics Furuno, MaxSea offers exclusive and native compatibility (simple Ethernet connection) with Furuno radars professional range.

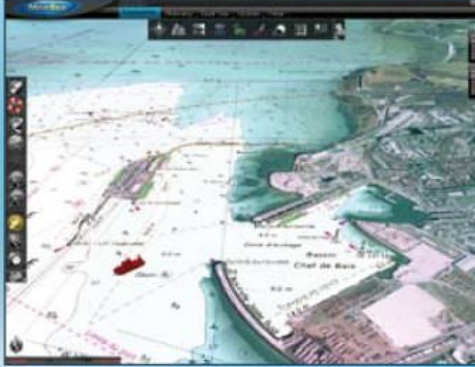
- For an optimum data integration, you can **overlay high definition radar picture** on the chart displayed in the software.
- You can **directly acquire ARPA** targets from MaxSea Time Zero.
- Directly **control your Radar** in MaxSea Time Zero (Gain, Seaclutter, Rainclutter, etc.).



ARPA and AIS tracking module : a reliable & efficient navigational aid to maximize safety

- Essential Tool for safety, the ARPA/AIS tracking module enables to **identify all targets around your ship** and anticipate their movements. Detailed information is available by just moving your mouse over the icon (Course, Speed, Closest Point of Approach [CPA] and Time to Closest Point of Approach [TCPA]).
- **Manage targets through a spreadsheet** view displaying all relevant information.
- **Define anti-collision alarms** according to various criteria.

Collision avoidance by anticipating all movements of surrounding vessels.



Multiple Chart Sources

MapMedia mm3d charts offer 4 different types of chart source so you can choose the best chart according to your navigation area :

- **mm3d Raster** (SHOM, UKHO etc.)
- **mm3d Vector** C-Map by Jeppesen
- **mm3d Vector** Datacore by Navionics
- **mm3d Vector** S57 IHO S-57.



Weather forecasts, tides and currents

- **Weather forecast** (wind, pressure, swell,...) and **tides** can be downloaded directly from Internet or requested via GRIB data file sent by email (free and unlimited data).
- **View ocean surface current speed and direction** with MaxSea weather overlay features (oceanic currents and high resolution atlas from hydrographic offices).

Moreover, with PBG module (Personal Bathymetric Generator), have the best view of the ocean floor ever



Have a complete and realistic vision of surroundings thanks to 3D data (Bathymetry and Altimetry), HR satellite pictures and latest generation of thermal imaging cameras.

MaxSea International - Technopole Izarbel - allée Théodore Monod - 64210 Bidart - France
t/ 05 59 43 81 00 - f/ 05 59 43 81 01 - info@maxsea.fr

www.maxsea.com

